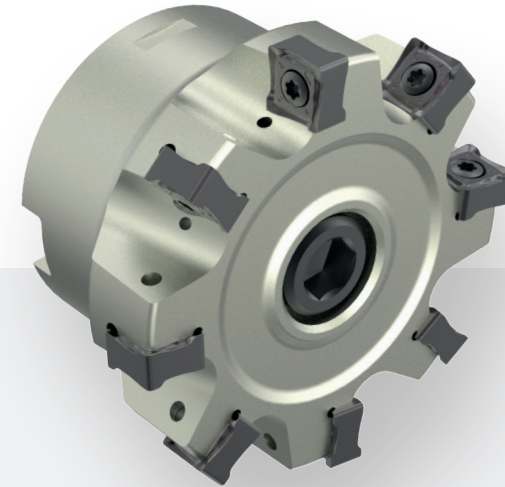


K

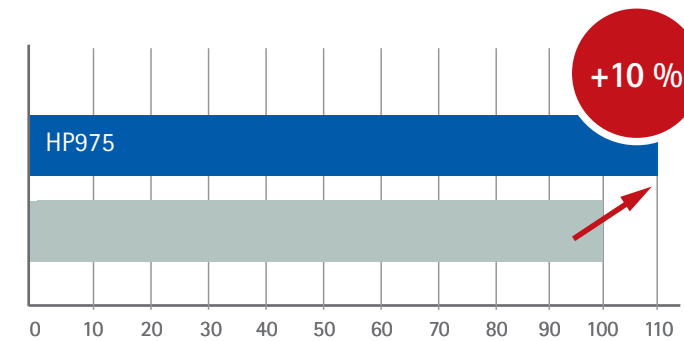
PIVOT BEARING

Machining of the mounting surfaces



	■	■
Material	EN-GJS (ADI 900)	
Tool	Corner Mill	Corner Mill NeoMill®-8-Corner
Insert	WSP	SNMU120508R-M05-HP975
Tool-Ø [mm]	63	
Tooth t	6	8
Cutting edges per insert	4	8
Coolant	dry	
v_c [m/min]	224 / 200	
f_z [mm]	0,21 / 0,17	0,15 / 0,13
v_f [mm/min]	1.400 / 1.200	
a_p [mm]	1,5 - 3,5	
a_e [mm]	20 - 60	
Number of cuts	2	

Machined parts



- Tool life increased by 10 %
- Less cutting forces lead to lower form and position tolerance
- CPP was reduced by 45 %